



COMMUNITY-DRIVEN INCLUSIVE, EQUITABLE,
MENTAL HEALTHCARE ACCESS

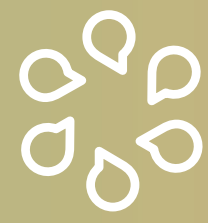
PROJECT OBJECTIVES



Analyse Mental Health
Services Access
Barriers



Identify, test, and assess
cost-effective solutions
to improve care
access



Engage and empower
communities



Test and evaluate
solutions



Policy
Recommendations

THE EQUICARES APPROACH

PILLAR 1

Researching and understanding barriers and inequalities

- ✓ **Develop the Atlas of Innovative Solutions**



PILLAR 2

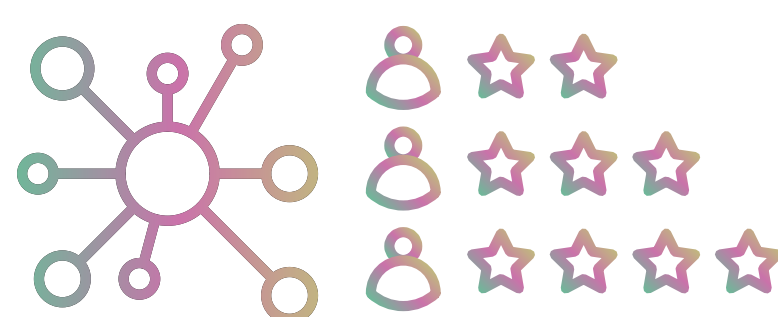
Engaging and co-creating



- ✓ **Smart Health Labs**
Mental healthcare service access
- ✓ **MOOCs**
 - Training Workshops
 - Citizen Science
 - Mental Health & Digital Literacy
- ✓ **AI-based Assistant**
Personalised mental health support

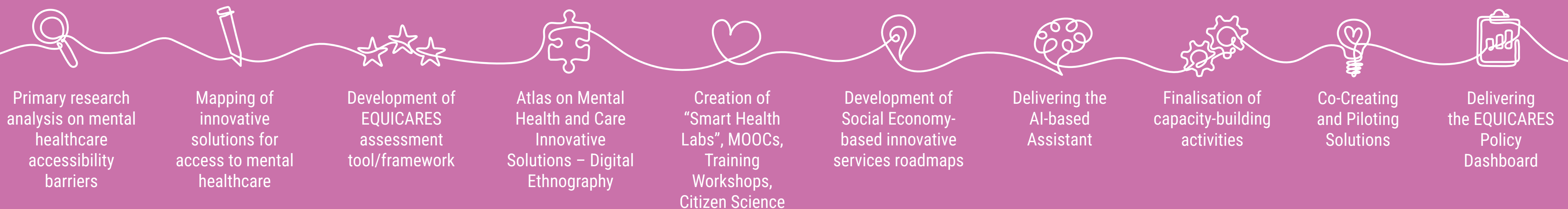
PILLAR 3

Piloting, evaluating, and sustaining



- ✓ **Co-creating and Piloting Solutions for accessible mental health services**
- ✓ **Inclusive Mental Health and Care Policy Dashboard**
 - Monitoring, assessment, and cost analysis tools
 - AI-based Assistant
 - Handbook of site-specific policy briefs

OUR JOURNEY



PROJECT PARTNERS



VISIT:
equicares-project.eu
EMAIL:
info@equicares-project.eu



Funded by
the European Union

Funded by the European Union. Views and opinions expressed are however those of the author(s) only and do not necessarily reflect those of the European Union or the European Health and Digital Executive Agency (HADEA). Neither the European Union nor the granting authority can be held responsible for them.

FOLLOW US:

